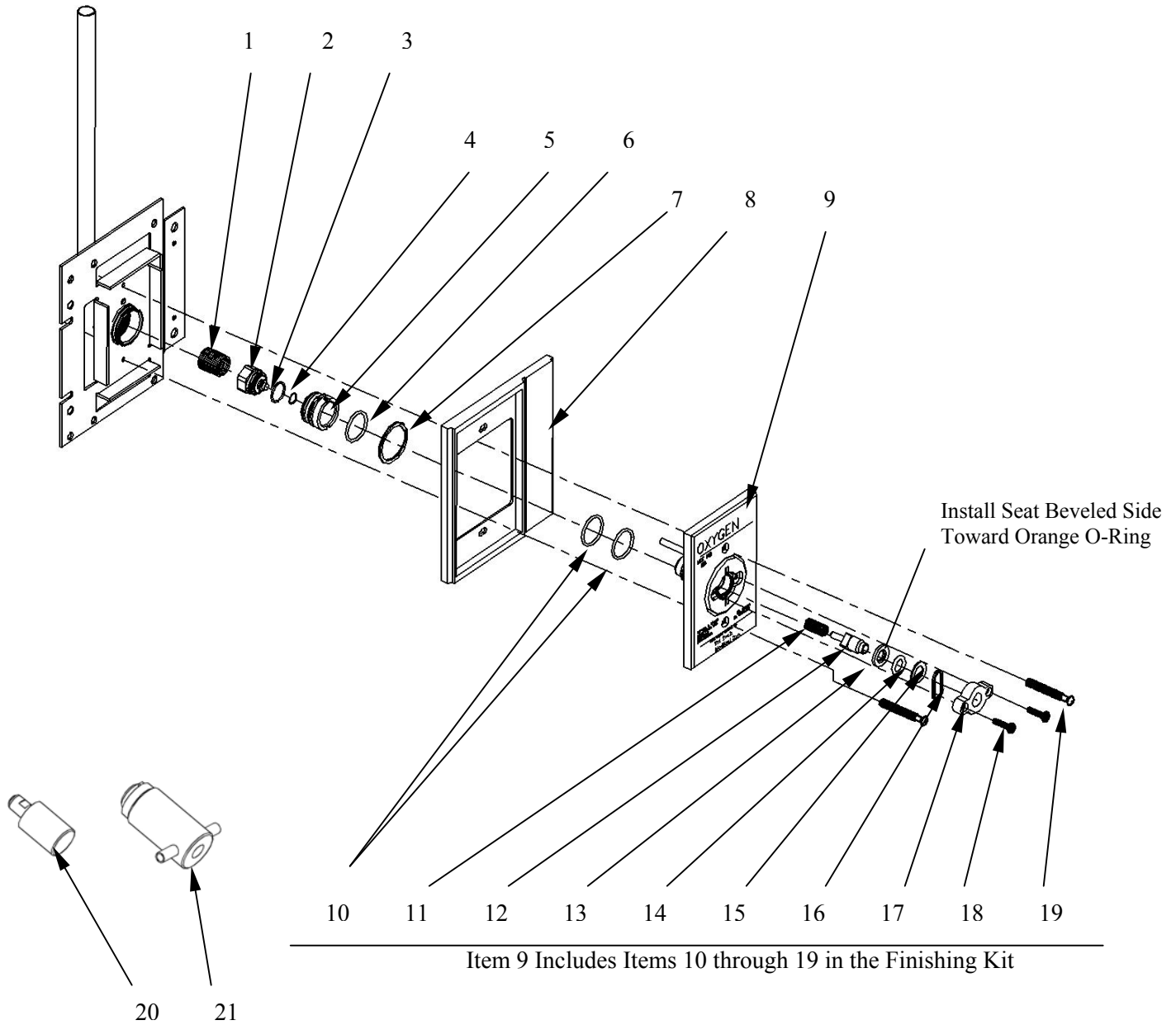


QUICK-CONNECT RECESSED OUTLET – Q11XX SERIES

OHMEDA/OHIO Compatible

Oxygen Outlet Shown

Andersen Medical Gas
12 Place Lafitte
Madisonville, LA 70447
<https://www.TheMedicalGas.com>
1-866-288-3783



Quick-Connect Recessed Outlet – Q11XX SERIES Bill of Material

Item	Part Number	Description	Quantity	Note
1.	13-1003R	Spring	1	
2.	Q1000-4R	Poppet	1	
3.	11-0008R	Poppet O-Ring	1	A
4.	11-0007R	Poppet O-Ring	1	A
5.	Q1000-3R	Check Retainer Bushing	1	
6.	11-0006R	Bushing O-Ring	1	B
7.	12-1038R	Retaining Ring	1	
8.	F1000-9R	Name Plate Housing	1	
9.	See Below	Outlet Finishing Kit	See Below	
10.	11-0008R	O-Ring	2	
11.	13-1001R	Spring	1	
12.	Q1000-5PR	Check Plunger	1	
13.	Q1000-7R	Plunger Seat Washer	1	
14.	11-0005R	Plunger Seat O-Ring (Orange)	1	
15.	12-1002R	Washer	1	
16.	13-9001R	Locking Spring	1	
17.	See Below	Indexing Plate Insert	See Below	
18.	12-3001R	Mounting Screws	2	
19.	F1000-11R	Mounting Screws	2	

Repair Tools:

20.	Q9900CT	Primary Check Removal Tool	1	
21.	Q9900SD	Secondary Check Removal Tool	1	

Item 9-Outlet Finishing Kits: (All kits are assembled with Items 10 through 19)

	Q1004AR	Nitrous Oxide	1	
	Q1016AR	Medical Air	1	
	Q1022AR	Medical Vacuum	1	
	Q1024AR	Oxygen	1	

Item 17-Indexing Plate Inserts:

	Q1000-8R	White Indexing Plate Insert	1	
	Q1000-18R	Black Indexing Plate Insert	1	

Primary Valve Kits (Kit Includes Items 10 through 18)

	Q1100RC	Primary Valve Kit with White Insert	1	
	Q1101RC	Primary Valve Kit with Black Insert	1	

Secondary Valve Kits (Kit Includes Items 1 through 6)

	Q1000KR	Secondary Valve Kit for all Gases	1	
--	---------	-----------------------------------	---	--

Note:	A: Install O-Rings items 3 and 4, on Poppet item 2. B: Install O-Ring item 6, on to Check Retaining Bushing item 5.
--------------	--