

# Materials Of Construction

Andersen Medical Gas  
 701 Indian Place  
 Dauphin Island, AL 36528  
<https://www.TheMedicalGas.com>  
<https://www.Shop.TheMedicalGas.com>  
 1-866-288-3783

Drawings on Page 5 illustrate the component design of Chemetron Medical Gas Outlet Stations. These units are engineered for operating and maintenance simplicity, easy disassembly for parts replacement, and safety-designed to conform to NFPA and CSA requirements.

Each component is identified by description, and replacement parts have part numbers for fast selection and ordering. Many of the numbered items are contained in the Chemetron Medical Gas Outlet Station Repair Kit (See Form No. 64-00-2005 for more information).

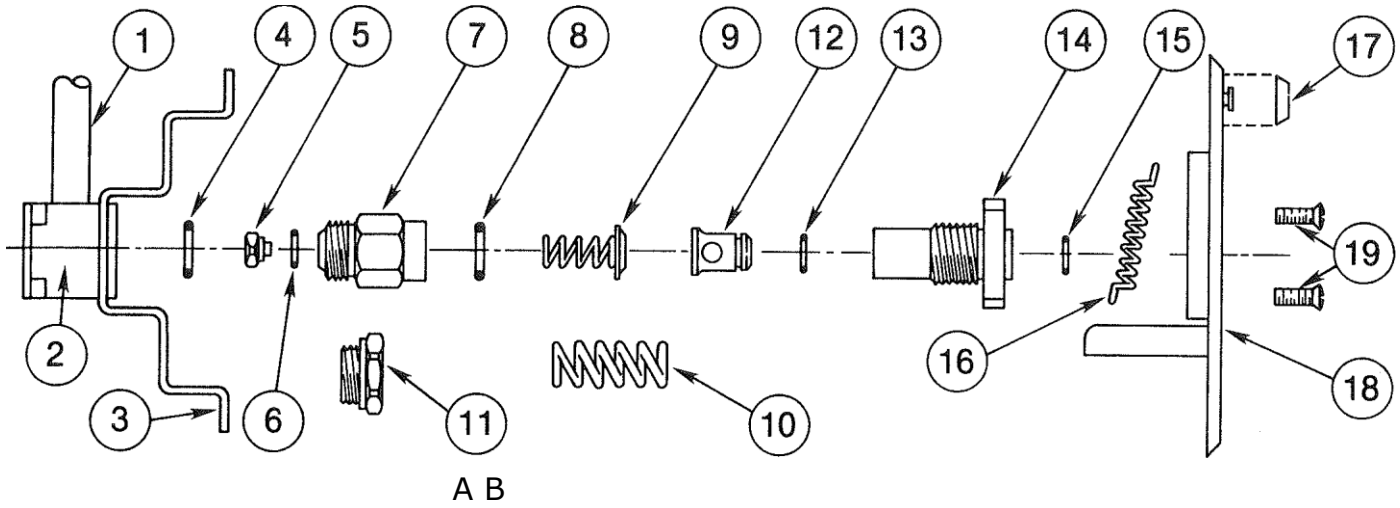
| ITEM DESCRIPTION  | CATALOG NO.                                  |
|---|--|
| 1. 6" Copper tube, for connection to gas or vacuum supply line          |  |
| 2. Mounting block   |  |
| 3. Back box<br>(Field replacement of items 1, 2 and 3 are not feasible) |  |
| 4. Mounting block O-ring  | 64-90-0185                                   |
| 5. Secondary check valve  | 64-90-0151"                                  |
| 6. Secondary check O-ring   | 64-90-0107                                   |
| 7. Housing  | 64-90-0002                                   |
| 8. Housing O-ring   | 64-90-0185                                   |
| 9. Secondary check spring   | 64-90-0151                                   |
| 10. Vacuum spring   | 64-90-0034                                   |
| 11. A. Test Plug (Plastic)  | 64-90-0001                                   |
| B. Metal Test Plug, for HP N <sub>2</sub> (Dynagen)                     | 64-90-0170                                   |
| 12. Poppet  | 98-90-0017                                   |
| 13. Poppet O-ring   | 64-90-0097                                   |
| 14. Valve body, Quick-connect   | 64-90-0039 (pressure, <u>without</u> poppet) |
| Valve body, Quick-connect   | 64-90-0040 (vacuum, <u>without</u> poppet)   |
| Valve body assembly, Quick-connect                                      | 64-90-0180 (pressure, with poppet)           |
| Valve body assembly, Quick-connect                                      | 64-90-0181 (vacuum, <u>with</u> poppet)      |
| 15. Valve body O-ring   | 64-90-0186                                   |

| ITEM DESCRIPTION                                    | CATALOG NO.  |
|---|--|
| 16. Face plate springs                              | 64-90-0096   |
| 17. Latch button                                    | 64-90-0003 (oxygen)<br>64-90-0004 (vacuum)<br>64-90-0005 (air)<br>64-90-0006 (nitrous oxide) |
| 18. Face plate                                      | See Form No. 64-00-2000  |
| 19. Face plate screws                               | 64-90-0096   |
| 20. Poppet (oxygen and vacuum)                      | 64-90-0028   |
| 21. Poppet (N <sub>2</sub> , Air, CO <sub>2</sub> ) | 64-90-0029   |
| 22. Poppet O-ring, D.I.S.S.                         | 34-90-0026   |
| 23. Valve body                                      | 64-90-0157 (oxygen)<br>64-90-0078 (vacuum)<br>64-90-0079 (nitrous oxide)<br>64-90-0080 (air) |
| 24. Face plate                                      | See Form No. 64-00-2001  |
| 25. Latch button                                    | 64-90-0020 (oxygen)<br>64-90-0021 (vacuum)<br>64-90-0022 (air)<br>64-90-0023 (nitrous oxide) |
| 26. Face plate screws                               | 64-90-0030   |
| 27. Dust cap and chain                              | 1218-A for O <sub>2</sub><br>1218-T for all other gases                                      |

\*Chemetron Outlet Stations manufactured with rear entry of pigtail (1) use Secondary Check Valve Catalog No. 64-90-0152.

# Component Parts For Quick-Connect And D.I.S.S. Outlet Stations

## Quick-Connect



## D.I.S.S.

